

**EPOR Antibody (C-term)**  
**Purified Rabbit Polyclonal Antibody (Pab)**  
**Catalog # AP20930c****Specification**

---

**EPOR Antibody (C-term) - Product Information**

Application	WB, FC,E
Primary Accession	<a href="#">P19235</a>
Reactivity	Human
Host	Rabbit
Clonality	Polyclonal
Isotype	Rabbit IgG

**EPOR Antibody (C-term) - Additional Information****Gene ID** 2057**Other Names**

Erythropoietin receptor, EPO-R, EPOR

**Target/Specificity**

This EPOR antibody is generated from a rabbit immunized with a KLH conjugated synthetic peptide between 470-504 amino acids from the C-terminal region of human EPOR.

**Dilution**

WB~~1:2000

FC~~1:25

E~~Use at an assay dependent concentration.

**Format**

Purified polyclonal antibody supplied in PBS with 0.09% (W/V) sodium azide. This antibody is purified through a protein A column, followed by peptide affinity purification.

**Storage**

Maintain refrigerated at 2-8°C for up to 2 weeks. For long term storage store at -20°C in small aliquots to prevent freeze-thaw cycles.

**Precautions**

EPOR Antibody (C-term) is for research use only and not for use in diagnostic or therapeutic procedures.

**EPOR Antibody (C-term) - Protein Information****Name** EPOR {ECO:0000303|PubMed:2163695, ECO:0000312|HGNC:HGNC:3416}

**Function** Receptor for erythropoietin, which mediates erythropoietin- induced erythroblast proliferation and differentiation (PubMed:[10388848](#), PubMed:[2163695](#), PubMed:[2163696](#), PubMed:[8662939](#), PubMed:[9774108](#)). Upon EPO stimulation, EPOR dimerizes triggering the

JAK2/STAT5 signaling cascade (By similarity). In some cell types, can also activate STAT1 and STAT3 (PubMed:[11756159](#)). May also activate the LYN tyrosine kinase (By similarity).

#### Cellular Location

Cell membrane {ECO:0000250|UniProtKB:P14753}; Single-pass type I membrane protein

#### Tissue Location

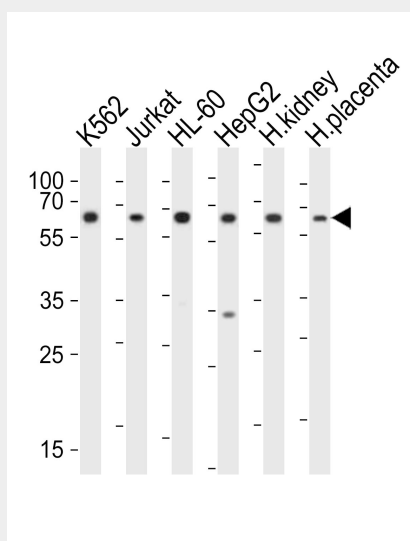
Erythroid cells and erythroid progenitor cells. [Isoform EPOR-S]: Isoform EPOR-S and isoform EPOR-T are the predominant forms in bone marrow.

### EPOR Antibody (C-term) - Protocols

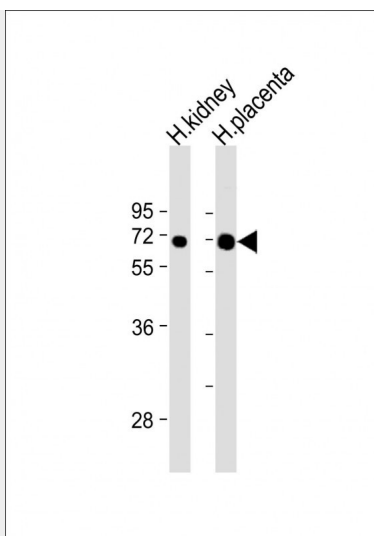
Provided below are standard protocols that you may find useful for product applications.

- [Western Blot](#)
- [Blocking Peptides](#)
- [Dot Blot](#)
- [Immunohistochemistry](#)
- [Immunofluorescence](#)
- [Immunoprecipitation](#)
- [Flow Cytometry](#)
- [Cell Culture](#)

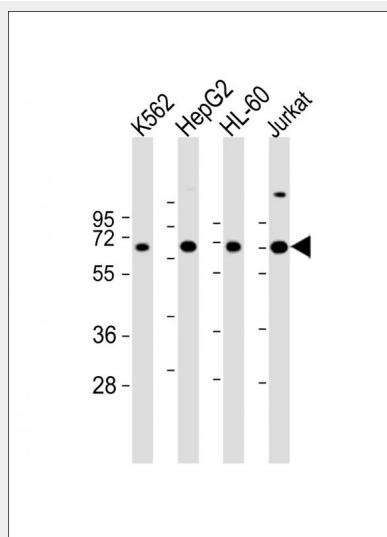
### EPOR Antibody (C-term) - Images



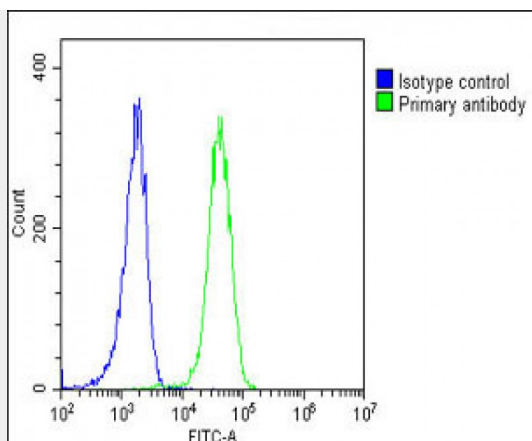
Western blot analysis of lysates from K562, Jurkat, HL-60, HepG2 cell line, human kidney, human placenta tissue (from left to right), using EPOR Antibody (C-term) (Cat. #AP20930c). AP20930c was diluted at 1:1000 at each lane. A goat anti-rabbit IgG H&L (HRP) at 1:10000 dilution was used as the secondary antibody. Lysates at 20 µg per lane.



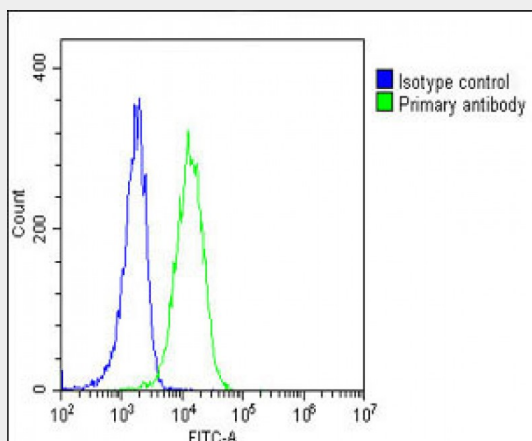
All lanes : Anti-EPOR Antibody (C-term) at 1:2000 dilution Lane 1: H. kidney whole lysate Lane 2: H. placenta whole lysate Lysates/proteins at 20 µg per lane. Secondary Goat Anti-Rabbit IgG, (H+L), Peroxidase conjugated at 1/10000 dilution. Predicted band size : 55 kDa Blocking/Dilution buffer: 5% NFDM/TBST.



All lanes : Anti-EPOR Antibody (C-term) at 1:2000 dilution Lane 1: K562 whole cell lysate Lane 2: HepG2 whole cell lysate Lane 3: HL-60 whole cell lysate Lane 4: Jurkat whole cell lysate Lysates/proteins at 20 µg per lane. Secondary Goat Anti-Rabbit IgG, (H+L), Peroxidase conjugated at 1/10000 dilution. Predicted band size : 55 kDa Blocking/Dilution buffer: 5% NFDM/TBST.



Overlay histogram showing K562 cells stained with AP20930C(green line). The cells were fixed with 2% paraformaldehyde (10 min) and then permeabilized with 90% methanol for 10 min. The cells were then incubated in 2% bovine serum albumin to block non-specific protein-protein interactions followed by the antibody (AP20930C, 1:25 dilution) for 60 min at 37°C. The secondary antibody used was Goat-Anti-Rabbit IgG, DyLight® 488 Conjugated Highly Cross-Adsorbed(OH191631) at 1/200 dilution for 40 min at 37°C. Isotype control antibody (blue line) was rabbit IgG1 (1µg/1x10<sup>6</sup> cells) used under the same conditions. Acquisition of >10, 000 events was performed.



Overlay histogram showing K562 cells stained with AP20930C(green line). The cells were fixed with 2% paraformaldehyde (10 min) and then permeabilized with 90% methanol for 10 min. The cells were then incubated in 2% bovine serum albumin to block non-specific protein-protein interactions followed by the antibody (AP20930C, 1:25 dilution) for 60 min at 37°C. The secondary antibody used was Goat-Anti-Rabbit IgG, DyLight® 488 Conjugated Highly Cross-Adsorbed(OH191631) at 1/200 dilution for 40 min at 37°C. Isotype control antibody (blue line) was rabbit IgG1 (1µg/1x10<sup>6</sup> cells) used under the same conditions. Acquisition of >10, 000 events was performed.

### EPOR Antibody (C-term) - Background

Receptor for erythropoietin. Mediates erythropoietin- induced erythroblast proliferation and differentiation. Upon EPO stimulation, EPOR dimerizes triggering the JAK2/STAT5 signaling cascade. In some cell types, can also activate STAT1 and STAT3. May also activate the LYN tyrosine kinase.

### EPOR Antibody (C-term) - References

Winkelmann J.C.,et al.Blood 76:24-30(1990).  
Jones S.S.,et al.Blood 76:31-35(1990).

Noguchi C.T.,et al.Blood 78:2548-2556(1991).  
Ehrenman K.,et al.Exp. Hematol. 19:973-977(1991).  
Nakamura Y.,et al.Science 257:1138-1141(1992).